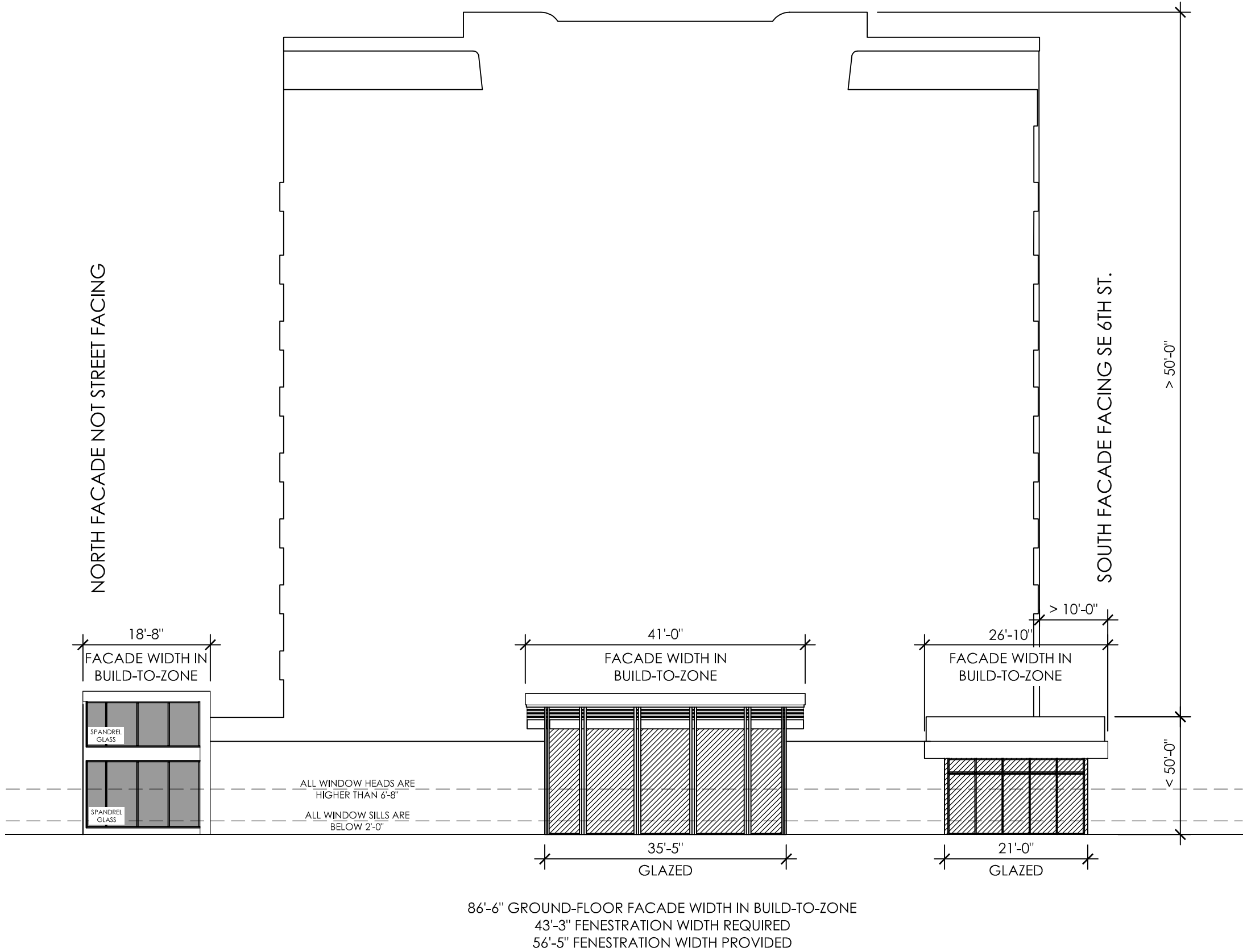


SOUTH ELEVATION ALONG SE 6TH ST - FENESTRATION DIAGRAM

SCALE: 1/16" = 1'-0"



WEST ELEVATION ALONG BRINY AVE - FENESTRATION DIAGRAM

SCALE: 1/16" = 1'-0"

MINIMUM FENESTRATION /
TRANSPARENCY WIDTH

PER CODE SECTION 155.3703.F.5, MINIMUM
FENESTRATION/TRANSPARENCY WIDTH, MINIMUM 50% OF
GROUND-LEVEL BUILDING FACADE WIDTH SHALL BE OCCUPIED BY
TRANSPARENT WINDOW OR DOOR OPENINGS

FENESTRATION STANDARDS

ANY TRANSPARENT WINDOW AND DOOR OPENINGS
OCCUPYING A GROUND-LEVEL STREET-FACING BUILDING
FACADE SHALL COMPLY WITH THE FOLLOWING STANDARDS:

- i. THE OPENING SHALL BE FILLED WITH GLAZING THAT HAS A
MINIMUM VISIBLE LIGHT TRANSMITTANCE OF 75% AND A
MAXIMUM REFLECTANCE OF 15%
- ii. THE OPENING SHALL BE DESIGNED TO ALLOW VIEW OF AN
INTERIOR SPACE AT LEAST FIVE FEET DEEP (E.G.,
TRANSPARENT OPENINGS MAY INCLUDE TRADITIONAL
STOREFRONT DISPLAY WINDOWS, BUT NOT MERELY GLASS
DISPLAY CASES). THE VIEW INTO A COMMERCIAL USE SHALL
NOT BE PERMANENTLY OBSTRUCTED BY SCREENS, SHADES,
SHUTTERS, OR OPAQUE FILMS APPLIED TO THE GLAZING.

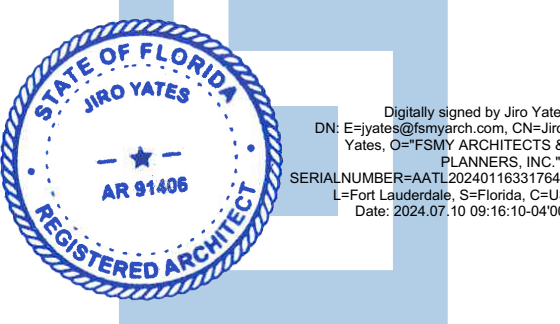
DRPC
ARCHITECTS + PLANNERS
888 SOUTH ANDRUS AVE SUITE 300
FORT LAUDERDALE, FLORIDA 33304
PH: (954) 764-6575 FAX: (954) 764-8622
PZ24-12000003
10/02/2024
CA # AAC000447

DESIGNED	DRAWN	CHECKED
JY	JJ	JY

R E V I S I O N S	
DATE:	COMM:
01/12/24	22019

580 BRINY AVE.

580 BRINY AVE.
POMPANO BEACH, FL



FENESTRATION DIAGRAMS

SITE PLAN APPROVAL

A-205